



WIPPERMANN



Maintenance-free chains

Efficient, reliable, economical
and individually configurable



BIATHLON

Special coatings guarantee high wear resistance even in cases of insufficient relubrication and expand the service life of the BIATHLON chain.

Outer link	Steel
Inner link	Galvanically nickel-plated
Rollers	Black Coating
Bushings	Steel
Polymer bearings	-
Pin	Chemically nickel-plated



BIATHLON KS

Highest corrosion resistance in its class, RoHS compliance due to chrome-VI-free coatings as well as excellent wear resistance distinguish the BIATHLON KS.

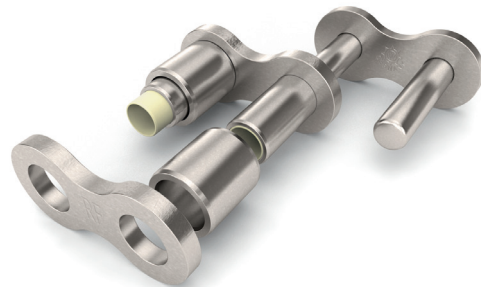
Outer link	Anti-friction coating (Zn-Al-flake-coated)
Inner link	Anti-friction coating (Zn-Al-flake-coated)
Rollers	Black Coating
Bushings	Galvanically nickel-plated
Polymer bearings	-
Pin	Chemically nickel-plated



MARATHON

The combination of high-grade sinter bushings containing special lubricants and a specially coated pin makes a maintenance-free chain joint for lubricant-free applications.

Outer link	Galvanically nickel-plated
Inner link	Galvanically nickel-plated
Rollers	Galvanically nickel-plated
Bushings	Sinter steel with special lubricants
Polymer bearings	-
Pin	Chemically nickel-plated



MARATHON RF

High load-bearing, low friction polymer bearings offer a broad range of applications, including dry running operation, permanent contact with water and applications with chemical substances.

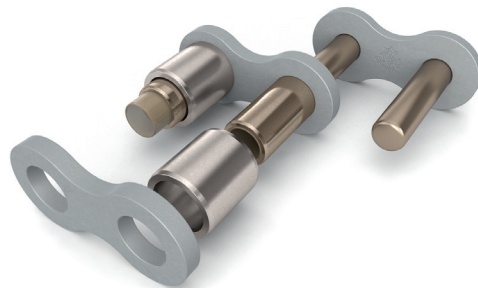
Outer link	Stainless steel
Inner link	Stainless steel
Rollers	Stainless steel
Bushings	Stainless steel
Polymer bearings	TRIGLEIT
Pin	Stainless steel



TRIATHLON HT

Coated pins and polymer bearings ensure high load-bearing capacity and extreme wear resistance at temperatures from -30 up to +200 °C.

Outer link	Steel
Inner link	Steel
Rollers	Black Coating
Bushings	Chemically nickel-plated
Polymer bearings	TRIGLEIT Z
Pin	Chemically nickel-plated



TRIATHLON KS

The stringent selection of high-grade steels, the environmentally-friendly corrosion protection and TRIGLEIT FDA polymer bearings make the TRIATHLON KS a real all-rounder in sensitive production processes.

Outer link	Anti-friction coating (Zn-Al-flake-coated)
Inner link	Anti-friction coating (Zn-Al-flake-coated)
Rollers	Stainless steel
Bushings	Chemically nickel-plated
Polymer bearings	TRIGLEIT FDA
Pin	Chemically nickel-plated

As versatile as their areas of application: Maintenance-free high-performance chains from the market leader

Highest loads, high temperatures, humidity, compliance with hygiene and FDA standards – the range of requirements placed upon industrial chains is extremely versatile. Maintenance-free high performance chains by Wippermann offer technically and economically customised solutions for your drive concept.

For centuries now, we have been committed to continuously promoting the new and further development of drive components of all kinds with regard to optimum fatigue strength as well as wear, corrosion and temperature resistance. We have continuously pushed the technical and economical boundaries, for instance through our consequent selection of high-grade steels, environmentally-friendly and FDA-compliant functional coatings as well as innovative polymer bearings. Today, a broad range of low-maintenance and maintenance-free

industrial chains by Wippermann virtually meet all requirements for drive systems - especially in the electrical, foodstuff and packaging industries as well as in the automotive industry where lubrication of the chain is not possible or not desired due to technical or economical reasons. In addition to our six high-performance models, you also have the option to individually customise our maintenance-free chains to your own requirements. Please do not hesitate to contact us – your success is our motivation.



Research and development

Our research activities are dedicated to developing products for future requirements and to open up new fields of applications in which the use of our chains has not been efficient thus far.



Product engineering

We develop complete sprocket-chain systems with perfectly matched components that provide optimum functionality and efficiency of our customers' drive systems.



Manufacturing engineering

We offer a manufacturing depth that is unique in the industry and thus adapt a large proportion of our machinery to our special requirements.



Application advice

We can draw on a wealth of experience regarding the varied fields of application of our chains and provide our customers with advice for the development of their systems and products already at an early stage.

Your success is our motivation. For over 120 years.

Our extensive technological know-how, great innovative power and long-standing expertise gained in countless projects in a large variety of industries have put us in a position to offer our customers an extremely wide range of reliable standard and special chains as well as sprockets.

Comprehensive engineering services and individual application advice complete our range of performances and make us your reliable partner for all challenges regarding your drive system.

WIPPERMANN jr. GmbH
Delsterner Straße 133
58091 Hagen
Germany

Phone +49 23317820
Fax +49 2331782356
E-mail info@wippermann.com
Internet www.wippermann.com